



SHERNBAO PET PRODUCTS MFG CO., LTD.

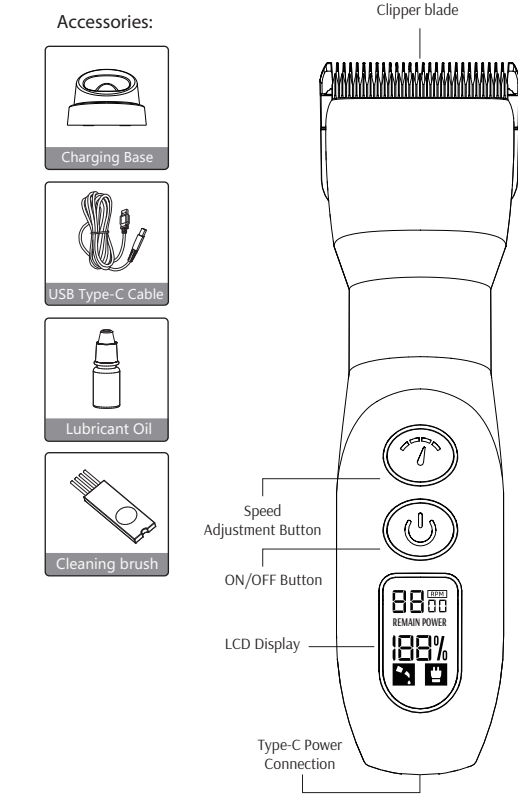
No. 81 Fengyi Road, Lanjiang Street, Yuyao City, Ningbo City, Zhejiang Province

+86 21 33550685 / 33550686

WWW.SHERNBAO.COM

## CLIPPER SPECIFICATIONS

Model	PGC-880
Input	5V ---1A 8W Max
Lithium Battery	3.7V 2000mAh
Charge Time	160 minutes
Run Time	240 minutes
Speed	5000 - 5500 - 6000 SPM
Noise	≤ 65 dB
Package Includes	Clipper USB Type-C Cable - 2.4m / 7.9feet. Cleaning Brush Lubricant Oil Manual



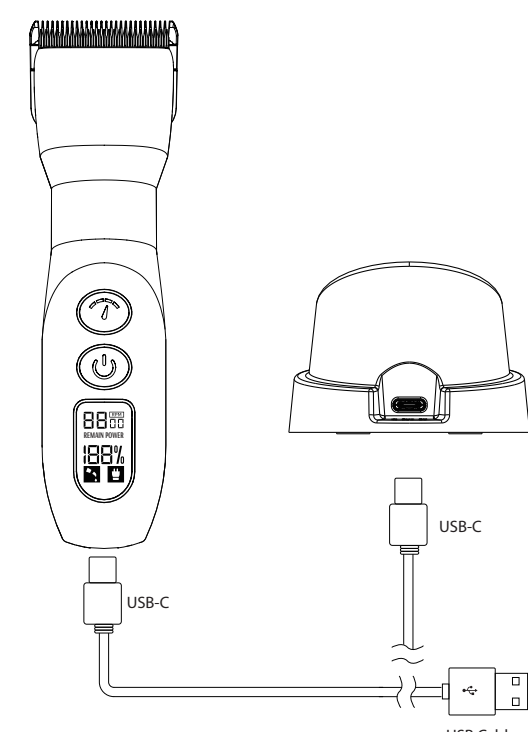
①

## CHARGING INSTRUCTION

As shown in the figure, there are two charging methods, the efficiency of charging is the same.

- ①. Insert the power adapter output plug to the clipper for charging.
- ②. Insert the power adapter output plug to the charging station, place the clipper in the charging station for charging.

- \*1. The clipper can also be used while the power adapter output plug to the clipper. The battery will be charged simultaneously when the clipper operated with a cord. But the charging time will be longer if the clipper is operating.
2. In order to maintain a tight connection of the output plug to the clipper, it is recommended to always plug the power adapter output plug into the charging station and use the second method to charge the clipper, unless there is an urgent need for temporary corded operation.
3. You can return the clipper to the charging station at any time for a full charge, or even use the battery before a charge cycle is complete. Like most rechargeable batteries, lithium-ion batteries perform best when used frequently.
4. This clipper has a fully charged automatic power off protection function, so you don't have to worry about keeping the clipper in the charging station for a long time.



③

## MAINTAINING BLADES

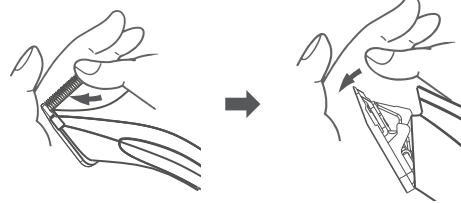
### CAUTION:

Turn OFF the clipper and disconnect from outlet before performing maintenance.

### BLADE REMOVAL, MAINTENANCE AND INSTALLATION

#### ◆ BLADE REMOVAL

Hold the clipper face up with one hand and press the blade down with thumb, then remove the blade into the other hand to avoid dropping the blade.

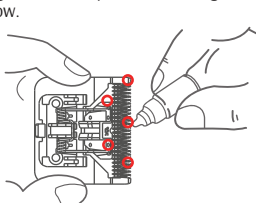


#### ◆ BLADE MAINTENANCE

1. Blade cleaning: Press and hold the top of the shear blade. Use the cleaning brush to clean hair between the shear blade and the fixed blade.



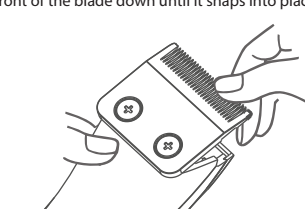
2. Blade oiling: Use 1-2 drops of lubricating oil on the 5 points shown below.



- ⚠ Do not detach the blade spring while maintaining to avoid malfunction.

#### ◆ BLADE INSTALLATION

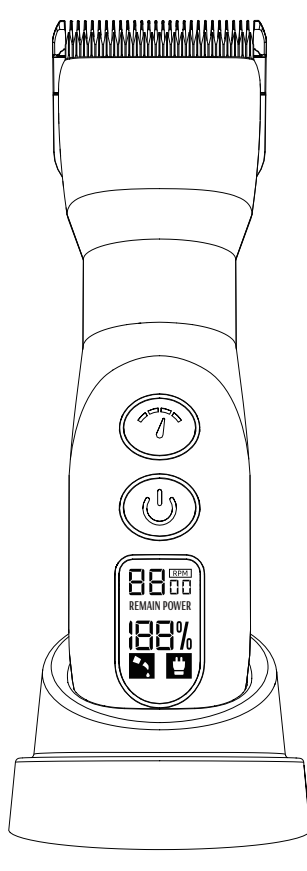
1. Hold the clipper face down with one hand and place the bottom of the blade along the middle of the blade with the clipper. Push the front of the blade down until it snaps into place.



⑤



Model: PGC-880



## D SERIES BLADE CORDLESS ANIMAL CLIPPER

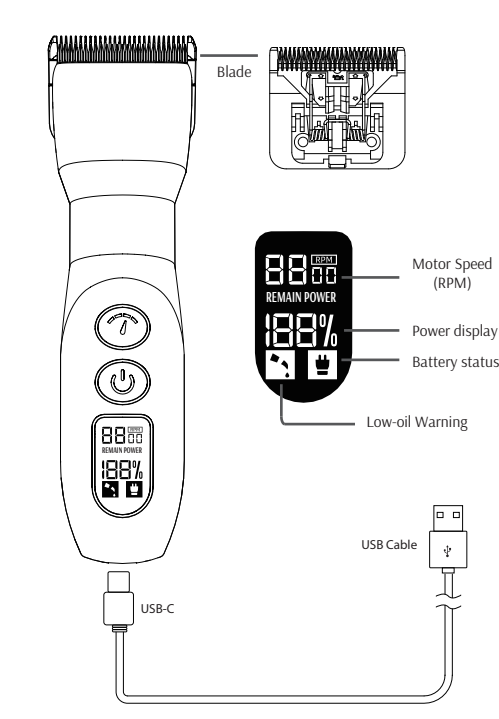
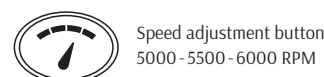
Pet Clipper

## USAGE

Push the switch lever and adjust it to the desired speed position to use the clipper.

1. When the battery level is sufficient, the clipper can be operated cordless.
2. When the battery level is very low or there is no time to charge the clipper, it can be temporary operated with a cord like the corded version.

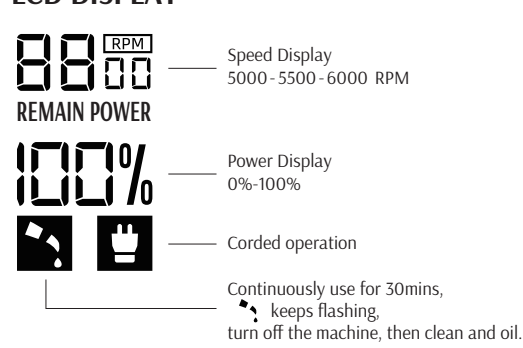
\* The battery will be charged simultaneously when the clipper operated with a cord.



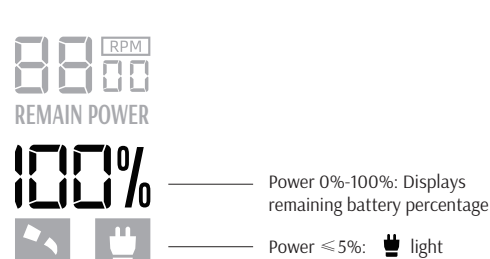
②

## DISPLAY

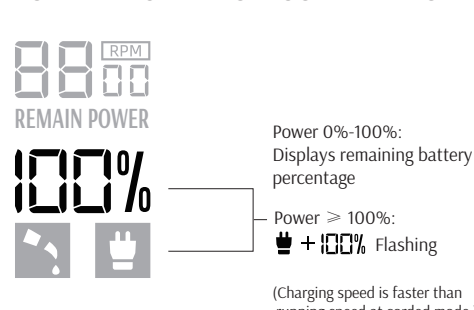
### LCD DISPLAY



### POWER DISPLAY ON CORDLESS MODE



### POWER DISPLAY ON CORDED MODE



(Charging speed is faster than running speed at corded mode.)

④

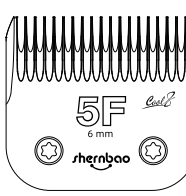
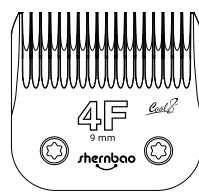
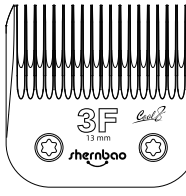
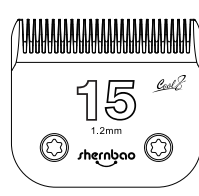
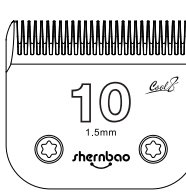
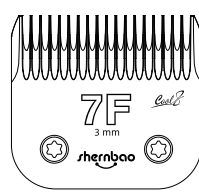
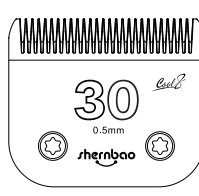
## OPTIONAL BLADE SERIES

Blade	3F	4F	5F	7F	#10	#15	#30	#40
Size	13mm	9mm	6mm	3mm	1.5mm	1.2mm	0.5mm	0.25mm

\*The clipper comes with a #10 blade.

### Material

Comb blade: 440C Stainless-steel  
Shear blade: Titanium Coating Ceramic (Coarse)



⑥